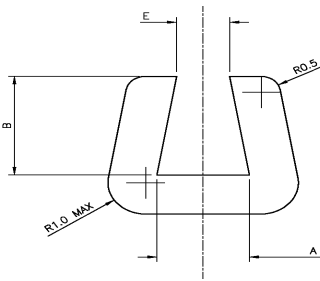




GROMMET STRIP

Grommet edge protection strip is supplied in continuous length for cutting to size to fit any shape and size of aperture or exposed edge. It is a close fitting profile that fits without the need for adhesive and provides effective edge protection against chafing of cables routed through sharp edged cut out and holes. The standard grommet is manufactured from halogen free polyethylene, LDPE.

Available to special order: *Flame retardant grade*



MATERIAL CHARACTERISTICS

| | |
|------------------------|----------------|
| Continuous temperature | -30 to 80 C |
| Tensile strength | 27 MPa |
| Elongation at break | 450% |
| Flammability | not applicable |
| RoHS compliant | yes |

| Part No. | Plate thickness | Min. radius | E | Coil Qty |
|----------|-----------------|-------------|-----------|----------|
| GS2 | 0.5 - 1.5 | 4 | 0.5 - 0.7 | 25 |
| GS3 | 1.5 - 2.5 | 5 | 1.2 - 1.4 | 25 |
| GS4 | 2.5 - 3.8 | 6 | 2.1 - 2.3 | 25 |
| GS5 | 4.0 - 4.9 | 8 | 3.5 - 3.8 | 25 |
| GS6 | 4.5 - 6.5 | 9 | 4.0 - 4.3 | 25 |



PANEL EDGE BEADING

Manufactured from self-extinguishing flexible PVC this beading is designed to cover panel edging to minimise the risk of cuts and to ensure wire bundles do not chafe through bulkheads.

MATERIAL CHARACTERISTICS

| | |
|------------------------|--------------------|
| Continuous temperature | -20 to 70 °C |
| Tensile strength | 15 MPa |
| Elongation at break | 220% |
| Flammability | self-extinguishing |
| RoHS compliant | yes |

| Part No. | Height, mm | Width, mm | Top opening, mm | Coil qty | To fit panel |
|----------|------------|-----------|-----------------|----------|--------------|
| EB 1 | 9.5 | 4.95 | 1.1 | 25 | 1.0 |
| EB 2 | 6.3 | 5.0 | 1.0 | 75 | 2.0 |